



**C-RACER**  
www.c-racer.com

# INSTRUCTION

| Model   | Product                 | Code     |
|---|-------------------------|----------|
| Royal Enfield Interceptor 650<br>Royal Enfield Continental GT 650 | Front Fender Café Racer | FF-RE-CR |

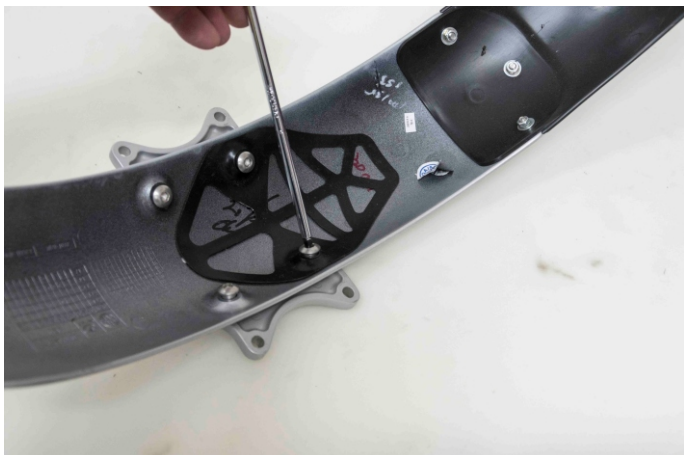
You are advised to read the instructions carefully, before you proceed to any changes.  
Any modifications on your motorcycle should be performed by specialized personnel,  
however the installation process of this product is quite easy if you follow the instructions below.

## CONTENTS

- 1 X Plastic Fender
- 4 X screws M6X10 (allen-round head-washer)



Undo the old fender on the bridge  
as you see on the left-hand photo.



Turn the fender upside down and remove  
the bridge from the plastic cover.



3



Place the new fender in position and tighten in place using the screws you will find in the installation package.

4



Make sure you tighten the new fender in place.



The end result should appear as in the photo on the left.  
Thank you for choosing one of our products.

**The product is for race use only**

For any further information please do not hesitate to contact us: Tel.: +30 2108075387 Email: [info@c-racer.com](mailto:info@c-racer.com)